

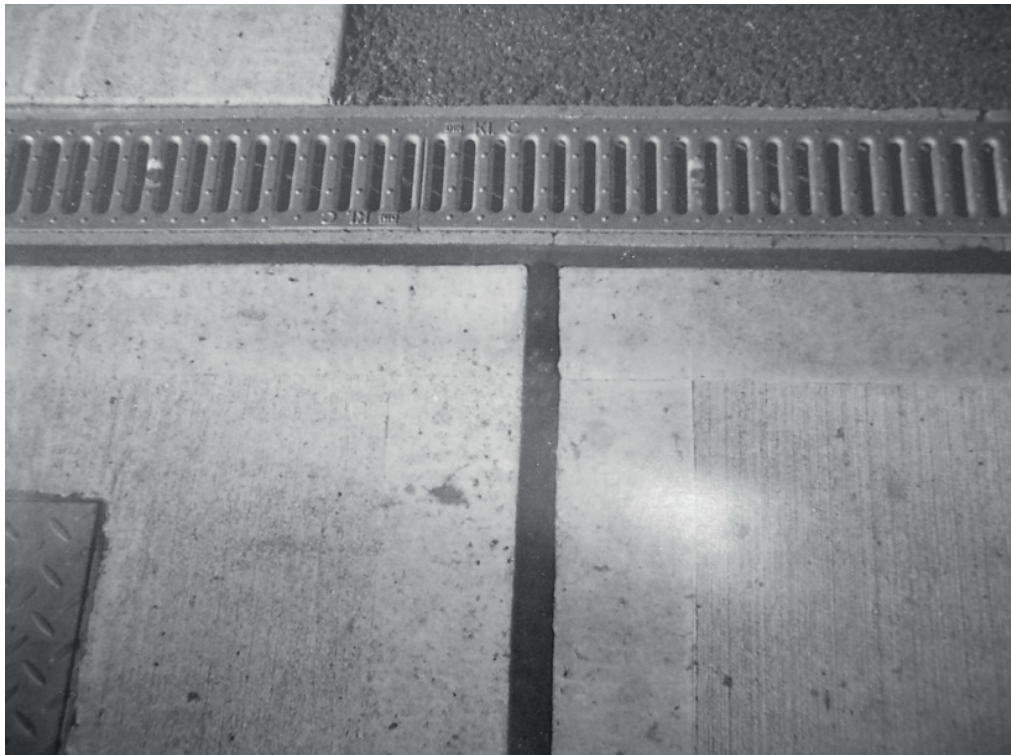
Epoxy Joint Sealant



Manufacturers of High
Performance Floor
Coatings and
Re-Surfacing Screeds

EPOXY ADHESIVES

- ▲ **Outstanding Chemical Resistance**
- ▲ **Rapid Strength Development**
- ▲ **Adheres to all Building Substrates**
- ▲ **No Primer Required**



THE RANGE

We have been manufacturing a specialist range of products for the construction industry for over three decades. All offer outstanding chemical resistance and good long term performance and great value for money.

EPOXY JOINT SEALANT

A twin pack epoxy/polyurethane resin for sealing expansion joints found in concrete, stone, brickwork and timber. This product offers superb chemical resistance and performance. Ideal for petrol stations and chemical storage areas.

Available in 1 Litre packs.

7 Haviland Road
Ferndown Industrial Estate
Wimborne
Dorset
BH21 7RZ

Phone: 01202 891899
Fax: 01202 896983
Email: sale@epoxyproducts.co.uk
Web: www.epoxyproducts.co.uk

<http://www.epoxyproducts.co.uk/epoxyadhesives.html>



Manufacturers of High
Performance Floor
Coatings and
Re-Surfacing Screeds

EPOXY ADHESIVES

Epoxy Products Limited
7 Haviland Road
Ferndown Industrial Estate
Wimborne
Dorset
BH21 7RZ

Phone: 01202 891899
Fax: 01202 896983

Email: sale@epoxyproducts.co.uk
Web: www.epoxyproducts.co.uk

Epoxy Joint Sealant

DESCRIPTION

JOINT SEALANT is a two part epoxy/polyurethane resin joint sealant for sealing expansion/contraction floor joints found in concrete, stone, asphalt, timber, resin based flooring and metal surfaces. This sealant offers superb resistance against attack by chemicals, oil, greases, petrol, solvents and acids.

USES: Ideally suited for sealing expansion/contraction floor joints in concrete, polymer modified screeds, stone, asphalt, timber and metal substrates. Factory floors, hard standings, petrol forecourts, effluent channels, driveways and other difficult situations.

PREPARATION: Surfaces must be dry, free from grease, oil and other forms of contamination. Wire brushing is advisable. Remove any loose materials and brush clean. No priming is normally required, however, for extremely weak or porous substrates prime the substrate either immediately prior to applying the Epoxy Joint Sealant or the previous day with Epoxy Tack Primer.

MIXING: Empty the contents of Pack B (Hardener) into the tin labelled Pack A (Resin) and stir thoroughly together using an electric drill and paddle attachment for 3 minutes. Ensure you reach the bottom and sides of the tin to thoroughly mix both components. Once mixed use all within 1 hour.

APPLICATION: To ensure optimum performance it is particularly important to observe the following. For joints 5-10mm wide, depth should be equal to width. For joints 10-20mm wide, depth should be 10mm. For joints over 20mm wide, depth should be half the width. Pack out the joint as necessary to form the correct depth with Polyethylene Foam Rod. For sealing horizontal joints, pour directly from the tin or from a barrel mastic gun. The material possesses self levelling properties therefore tooling is not normally required. For sealing vertical joints use Epoxy Joint Sealant Vertical Grade) and apply by barrel mastic gun. This grade will require to be smoothed using a wet stick. There is no sag for the Epoxy Joint Sealant Vertical Grade joint for widths of up to 25mm.

HEALTH AND SAFETY: Always read the separate Health and Safety Data sheet prior to handling this product.

PRODUCT DATA

This product is a medium modulus joint sealant designed for low movement floor joints.

COVERAGE

1 Litre will seal 7 linear metres of joint measuring 12mm x 12mm.

POT LIFE (Workable time)

When fully mixed, approximately 60 minutes @ 20 C. Extended pot life at lower temperatures, reduced at higher temperatures.

CURING TIME

Hard cure after 24 hours @ 20C.

Full cure with maximum hardness after 7 days @ 20C

CHEMICAL RESISTANCE

Resistant to spillages of many chemicals commonly met within industry.

Contact Technical Services for more advice.

PHYSICAL PROPERTIES

Shore Hardness	35 - 45
Elongation at Break	15 - 85%
Movement Accommodation Factor	15 - 20%

SHELF LIFE

12 Months in sealed containers when stored under normal conditions

COLOURS

Silver Grey, Slate Grey, Tile Red, Off White.

TOOL CLEANING

Occasionally wipe the face of the trowel to release the build up of resin tack and clean all tools with our CLEANING SOLVENT.

Whilst Epoxy Products Limited endeavours to ensure that any advice, recommendation, specification or information it may give is accurate and correct, it can not, because it has no direct or continuous control over where or how its products are applied, accept any liability either directly or indirectly arising from the use of its products, whether or not in accordance with any advice, specification or information given.